

YOUTH AND

UPDATES FROM SCHOOLS

Honoring a namesake

■ Photographs by Dorothea Lange donated to school

HECTOR TRUJILLO

Staff Writer

htrujillo@timespressrecorder.com

The South County Historical Society recently donated more than a dozen pictures by renowned photographer Dorothea Lange to the Nipomo elementary school bearing her name.

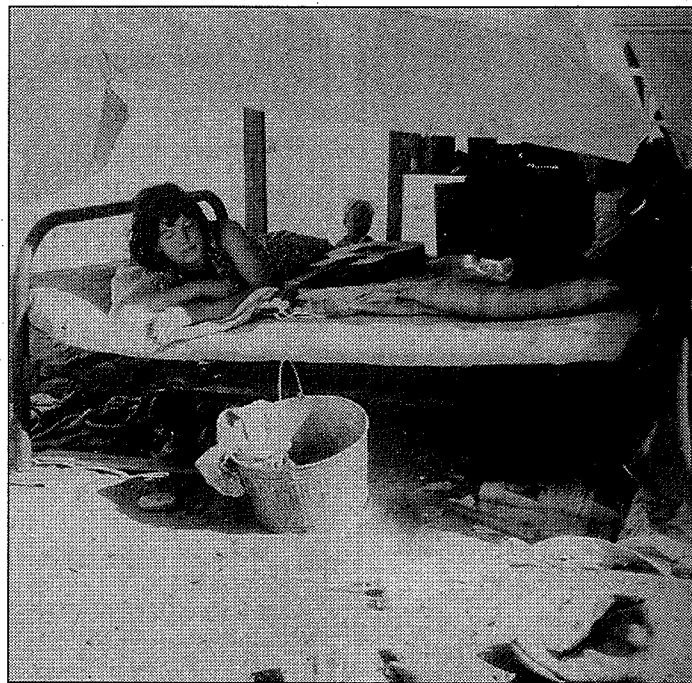
Many of the pictures, which display some of Lange's most famous works, were collected by Cal Poly California history students as part of a class project before being sent to the society.

"The pictures are just wonderful, and we are very excited to have them," said Irene Iwan, Dorothea Lange principal. "It will give the students an opportunity to know more about her and what her work means."

Dorothea Lange Elementary opened Aug. 21, 2006, and currently has more than 500 students. Before the donation, the only photograph of Lange's at the school, titled "Migrant Mother," was in its front office.

"I got a call several years ago regarding naming the school after (Lange) and played a role in the final decision," said Dan Krieger, Cal Poly history professor. "I had the students do (the project) because of the importance and relevance of her work."

The other choice being considered for the school at the time was naming it after Florence Thompson, who is depict-



This 1935 photo by Dorothea Lange portrays an Oklahoma potato picker's family encamped on the flats near Shafter.

ed in Lange's famous photograph "Migrant Mother."

"I think it is difficult for many people to realize what past generations have gone through," said Craig Rock, South County Historical Society librarian and resource center educator.

"The work intensifies the message of what was happening during that time, including the interment of Japanese Americans."

In 1941, Lange was awarded a Guggenheim Fellowship for excellence in photography. After the attack on Pearl Harbor on Dec. 7, 1941, Lange gave up the prestigious award to record the forced evacuation of Japanese Americans to relocation camps

in the American West.

"I had the pleasure of meeting (Lange) as a student in college," Krieger added. "She wanted to make sure people never forgot about the Depression and other events that impacted American history."

In the early 1960s, Krieger attended the University of California at Berkeley, where he was introduced to Lange by her husband and UC Berkeley economics professor Paul Taylor.

Taylor and Lange together documented rural poverty and the exploitation of sharecroppers and migrant laborers for the next five years — Taylor interviewing and gathering economic data, Lange taking photos.