

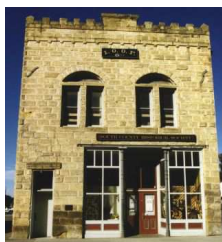


South County Historical Society

Heritage Press

Volume 17, No 9

DECEMBER 2013



HISTORIC IOOF HALL



SANTA MANUELA SCHOOLHOUSE



PAULDING HISTORY HOUSE



HERITAGE HOUSE



RUBY'S HOUSE



THE BARN

How do I begin? The outpouring of love and concern and good wishes from all of you has been overwhelming, as wonderful as the circumstances are not. I've heard from people who said they didn't really know us but wanted to express their feelings. It has been a humbling experience to see how much Kirk was cared for.

And I gotta tell you, Kirk would have loved it. There's nothing that made him happier than an audience that was pleased. That guy would have thought this was the best thing he'd ever experienced. I promise you, he is basking in your warmth.

We all knew he would have to leave; he's been so ill for such a long time, fighting and ignoring the problem to the best of his ability. But knowing he was going isn't the same as experiencing the loss. (If any of you haven't seen his obituary and would like to, go to legacy.com, enter his name, and search back as far as you need to get to Nov 16 deaths. It's up until 12/24)

So here we are. He loved the Historical Society with a passion. As he and Ross Kongable began the digitization of the collection back in 2000, he believed the Society could grow and thrive. Those two men spent over two years taking all of the handwritten records from 25 years (!) and typing them into the new database: Past Perfect, the software all serious small museums use. Sometimes they had help; sometimes not. Data entry is not a high profile, cool occupation. They went to work *every* morning, typed and learned about the software, and paved the way for us as an organization to become truly functional in the modern museum world. Looking back, it must have been a daunting task, but they never hesitated.

Once they thought we were on our way, they went up to SLO History Center, called SLO County Historical Society back then, and taught them about the program. I don't remember where else they took their new-found knowledge, but they were eager to share.

Somewhere in the early years, Kirk and I were on a trip that took us to San Juan Bautista, and as we explored the town and museums (as we did everywhere we went), Kirk walking through their "livery stable barn", said, "This is what we need! Someplace for all our agricultural artifacts (he probably said, 'stuff') and our vehicles!. We have to build a barn." As usual, I thought he was blathering and ignored the import of that declaration. Kirk always had lots of ideas.

But this one blossomed. He pulled people in to help with the design. He went to meeting after meeting with the city. For two full years. He ushered it through. As our Mayor, Tony Ferrara, said last week, "It's funny when someone passes, you try to recall something about their past that 'stands out.' For me, it was the way he almost single-handedly championed the concept, design and construction of 'The Barn.' I remember the whole saga with the metal roof. So many people have enjoyed walking through that place. It will always be 'Kirk's Barn.'"

The 'metal roof' was a requirement that the city gave the building to not look 'new'. Kirk found a place in Indiana that sold metal roofs guaranteed to 'rust' within a month. But not rust through. His favorite compliment was when one old-timer asked him where the Barn had been moved from. It remained the story he was always most pleased with and quick to share.

It is still "Kirk's Barn," probably his proudest achievement for all his years in office.

He left the Presidency in 2006, leaving the Society in extraordinary financial shape.

In 2011, for the Centennial, when the city asked for us to do something special, we initiated the Historic Readers Theatre programs. Kirk dove in, happy to be back onstage, happy to help.

When he resumed the Presidency for 2012-2013, he continued the effort to rebuild our finances. He was Stage IV cancer, as he had been since 2009. Although he was having more trouble with his health, he was 'game' to do what he could. He worried, fretted, tried to figure out ways to move on. He cared to the very end. Do you?

And so, I ask you all, if you can find the spare Saturday to sit at a museum, we can make sure you get comfortable doing that. If you have a skill with paint or a hammer or a needle and thread, let us know. We are only as strong as our volunteers allow us to be...and it's been a year of loss for us. Charles Porter. Howard Mankins before him. We need your help. Right now, I honestly don't know how we can go on without it.

Please consider doing more than just reading. Thanks. And great love and gratitude to you all.

**CURATOR OF
COLLECTIONS**
Jan Scott



MUSEUMS SCHEDULE

THE BARN

HERITAGE HOUSE

SANTA MANUELA SCHOOLHOUSE

are open
Saturdays
from 12 to 3 pm
Sundays
from 1 to 4 pm

PAULDING HISTORY HOUSE

is open
1st Saturday of the month
From 12 to 3 pm

RUBY'S HOUSE

(PAT LOOMIS HISTORY LIBRARY)

is open
Monday thru Friday
1 to 5 pm

Historical Research
by appointment

Group tours
of any or all
of the museums
may be scheduled

by calling
805.489.8282
or email

SCHS76@sbcglobal.net

2014 Board of Directors

| | |
|----------------|------------------------|
| Ross Kongable | President |
| Susan Boughner | Vice President |
| Norman Baxter | Treasurer |
| Polly Nelson | Secretary |
| Jan Scott | Curator of Collections |
| Ross Kongable | Membership |
| Vivian Krug | Public Information |
| Linda Kime | Docent Leader |
| Joe Swigert | Property Manager |
| Jeff Kime | Information Systems |
| Gary Hoving | Parliamentarian |

EVENTS SCHEDULE

DECEMBER 8

Society Christmas Party
IOOF Hall
5:00 pm until 8:00 pm

In conjunction with
Elegant Evening in the Village

Our museums and offices
will be closed for the holidays
Dec 22
thru
Jan 10

Board of Directors' Meetings

are held the 3rd Wednesday of each month
Except June, July, December
at 6:00 pm
in the IOOF Historic Hall on Bridge Street
in Arroyo Grande
Members welcome

We apologize for the lateness in delivery of the November newsletter. Normally it is delivered within 3 days of submittal; however all of the 934xx zip code were 'mislaidd' somewhere in Post Office distribution center for seven days. Those outside the 934xx zip received theirs within 4 days.

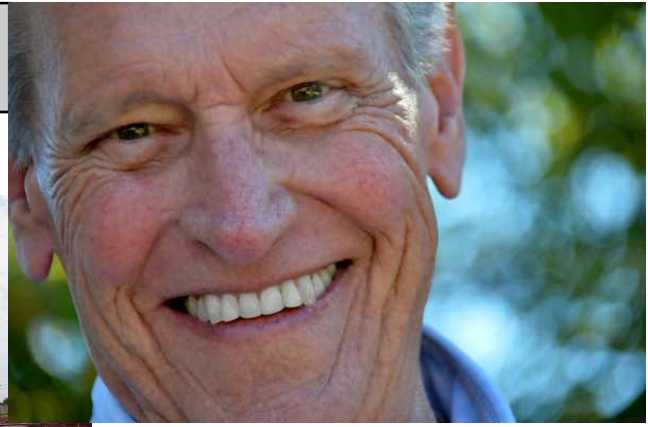
Hopefully this issue will arrive in time to remind you of our
DECEMBER 8 CHRISTMAS GATHERING.



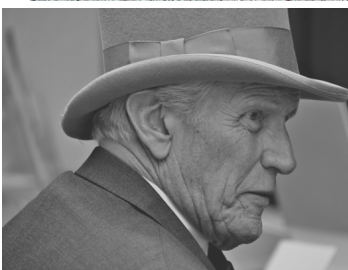
in Pismo Beach
Is now open for tours on
the
First and Third Sundays of
the month
At 1:00 pm.
Or by appointment

Call
Effie McDermott
805 . 773 . 4854
For more informaton

We'll Remember



Kirk's Barn
His pride & joy - once the structure's up, volunteers completed the exterior & interior. Jan and crew decorated the walls and brought in the artifacts.



HISTORY OF THE CHRISTMAS CARD

According to the American Greeting Card Association 1.6 Billion, yes Billion, Christmas Cards were purchased in 2012 (including boxed cards). Woman purchase over 80% of the cards and cards can range in price from .50 cents to \$10 dollars or more for very elaborate hand made cards.

In the early days, Christmas Cards were only sent out by the very wealthy and many cards were handmade with ornate embellishments, satin fringe and were mechanical, that is they moved, slid or opened into 3 dimensional works of art. In the mid to late 1800's contests were held by the leading manufacturer's in England, Germany and the United States and a first prize would be as much as \$1,000!

Christmas cards originated in England over 170 years ago. "You cannot reach perfection though you try however hard to there's always one more friend or so you should have sent a card to," wrote Richard Armour. Sir Henry Cole knew exactly what Armour was saying. The founder of the Victoria and Albert Museum in London had so many Christmas greetings to send that handwriting them was impossible. Yet he wanted to make his friends aware of the need to help the destitute on that holiday.

The answer. In the year 1843, Sir Henry commissioned John Calcott Horsley to paint a card showing the feeding and clothing of the poor. A center panel displayed a happy family embracing one another, sipping wine and enjoying the festivities. (So much for good intentions. The card drew criticism because showing a child enjoying a sip of wine was considered "fostering the moral corruption of children.") "A Merry Christmas and a Happy New Year to You" was printed on that first card. Legend says Sir Henry didn't send any cards the following year, but the custom became popular anyway.

Holiday cards designed by Kate Greenaway, the Victorian children's writer and illustrator and Frances Brundage and Ellen H. Clapsaddle, were favorites in the late 1800's and early 1900's. Most were elaborate, decorated with fringe, silk and satin. Some were shaped liked fans and crescents; others were cut into the shapes of bells, birds, candles and even plum puddings. Some folded like maps or fitted together as puzzles; other squealed or squeaked. Pop-up Cards revealed tiny mangers or skaters with flying scarves gliding around a mirrored pond.

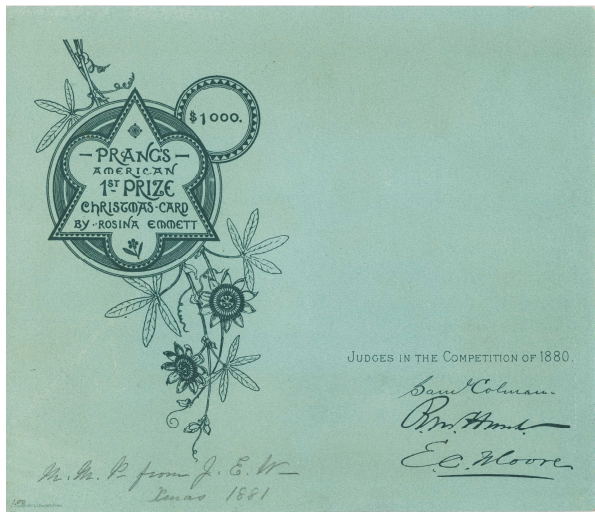
Manufacturers of the most beautiful Christmas Cards in the late 1800's and early 1900's were Charles Goodall & Sons, Marcus Ward & Co., Raphael Tuck & Sons, Siegmund Hildesheimer & Co., Thomas De La Rue and Wolff Hagelberg, to name a few. Most of the finest Christmas Cards were manufactured in Europe.

Most notable in the United States was Louis Prang from Boston, Mass., who is known as the "Father of the American Christmas Card". Believe it or not, the celebration of Christmas was once banned in Boston. The Puritans considered it an invention of the devil. Although the law banning Christmas was repealed in 1681, it was not proclaimed a legal holiday here until 1856. This was the same year that Louis Prang, a German immigrant from Breslau Germany, came to America. He later

became known as the father of the American Christmas card. Louis (1824-1909) was born in Breslau of a French Huguenot father and German mother, and learned to dye print calico in his father's shop. After traveling as a journeyman in Europe, he went to the United States in 1850, a refugee of the revolutionary period. He came well trained as a lithographer and settled in Boston, where he started as a wood-engraver. He also became a lithographer, color-printer and publisher. Soon after the Civil War he began printing chromo lithographs; and during the 1870's he began to issue color reproductions.

was a writer on many subjects such as the "Prang Method of Art Instruction" and the "Prang Standards of Color.", "Prang's Natural History Series," published in 1873, and "Prang's Aids for Objective Teaching," which appeared in 1877. These books had a noticeable effect on the teaching of art throughout the United States. In 1882, the pioneer of American lithographing organized the Prang Educational Co. to publish drawing books for schools, and Prang's water colors remained standard classroom equipment for many years. He was involved in politics. In 1860, the Mass. legislature, under the influence of the Knownothings, proposed, and finally passed, the "two year amendment," depriving naturalized citizens of the right to vote or hold office until two years after the completion of their citizenship. Many Republican legislators supported this discrimination against the foreign-born. The Germans resented such a challenge to their dignity as adopted citizens of the US. The Boston Germans met in Turner Hall, led by Charles Heinzen, Prang and Adolf Douai, who urged listeners to support only that party which "does not measure civil rights by place of birth, or human rights by color of skin. He is acknowledged as the creator of the Christmas card. Although such cards were prepared for sale probably as early as the 1840's, it was not until about 1862 that the custom of sending them to friends and relatives became common. He promoted the greeting card movement in America in 1856 and produced cards at his lithograph shop in Boston every year after that date. He can thus be blamed for the fact that each Christmas we have the tedious job of writing hundreds of Christmas greetings to our relatives and friends. In 1975 the United States Post Office honored Prang with a Christmas Postage Stamp depicting his work.

Bibliography: Faust, Albert Bernhardt. 1909. Wandel, Joseph. German Dimension of American History. Chicago: Nelson-Hall, 1979. America through the eyes of German Immigrant Painters. Boston: Goethe Institute Boston, 1976. Wittke, Carl. Refugees of Revolution. Philadelphia: University of Pennsylvania Press, 1952.



2014 Board of Directors:

President: Ross Kongable
Vice-President: Susan Boughner
Secretary: Polly Nelson
Treasurer: Norman Baxter
Curator: Jan Scott
Membership: Ross Kongable

Public Information: Vivian Krug
Docent Leader: Linda Kime
Property Manager: Joe Swigert
Information Services: Jeff Kime
Parliamentarian: Gary Hoving

At our November General Membership Meeting, held on November 12, election of the 2014 Board of Directors was held.

The nominated slate (listed in the November newsletter) was elected by acclamation. Kirk Scott was elected as President, but sadly passed away on the 16th. At the November 20 Board Meeting, Ross Kongable was appointed President. Ross had held both Secretary and Membership positions on the 2013 Board, and now, as President, Ross will continue in the position of Membership Chair.

Ross has been a member of the Society since 1993, and has held various positions on previous Boards, as well as being fully involved with the process of digitizing the Society's collection, and editor and publisher of the Heritage Press newsletter.

Vice-President Susan Boughner is new to the Society, (currently on an extended trip through Europe) and will be introduced to all in January.

Secretary Polly Nelson has been a member of the Society since 2001. She and her husband, Eric, have been active volunteers in the past.

Treasurer Norman Baxter has been a member since 2009. Norman has an extensive background in finance and financial planning. His wife, Janet, has been active in digitizing our Library.

Bio's of each of our Board members will be published in future editions of this Newsletter.

Maintaining our six museum buildings (all except the Barn, over 100 years old) , takes more than \$\$!

Our Society has been fortunate in having some great skills among our membership. Along with those skills, comes the willingness to share that skill, time and effort. Our current stars are **Sandy Arnold** and her father, **Fred Wilson**.

Our museum, Paulding History House, on Crown Hill here in the Village is over 120 years old, is in constant need of tender loving care and upkeep. That latest need was satisfied by Sandy and her Dad.

Sandy removed old carpeting in the dining room and the linoleum in the kitchen revealing douglas fir hardwood flooring. Her Dad then went under the house to adjust the supports to remove some buckling.

This allowed us to remove the previous coat of paint and return the floor to a natural finish. The refinishing was done by **Bill Evans Hardwood Floors** and was paid for by **Chapter 1351 of the Questars**.

Fred rebuilt the deteriorating hand-railing on the front porch. Sandy tiled the counters and installed a back-splash in the small kitchenette on the second floor. After removing the 1980's stair runner, Sandy painted the stairway. Meanwhile, in the kitchen, new drywall was installed and painted, paid for also by the **Questars**.

We are currently negotiating the complete replacement of the wooden picket fence (over 25 years old) surrounding the Heritage House Gardens. Maybe a little too much to ask of volunteers, so \$\$ step in.

The porch and steps of the Santa Manuela Schoolhouse are in need of repair/replacement. Any volunteer/\$\$ assistance would be appreciated greatly.

The South County Historical Society provides very popular attractions to the Village and 'keeping up appearances' is an ongoing task. The award from America In Bloom, a national competition, for *Historical Restoration* was awarded Arroyo Grande this year - and the Society was the star!

Ross Kongable, Prez

WELCOME NEW MEMBERS

Daneal & Christopher Nally

DOCENT LEADER

Linda Kime



I wish to thank all of our weekend docents as well as special tour and event docents who have volunteered in our museums this past year.

Nearly 1,000 hours were logged at our five museums this year.

Many of our docents volunteer multiple times in a month. We are constantly seeking new volunteers to lighten the load so that each would only have once or twice a month to offer their time. Please don't feel you have to be a full-blown historian to 'sit' our museums. Most of the exhibits are well documented, and the docent's duties are to simply guide visitors and provide information where they might find more information. Currently, our museums are open for only 3 hours on Saturday or Sunday, and we do miss a lot of visitors with such short hours. We would like to expand our hours and open days to Thursday and Friday as well if there are sufficient docents. The hours could be split so that each would only have to serve two hours.

Please consider offering just two hours a month to help us share our beautiful and extensive collection of local history. Call me - 489-1837 to schedule our next year.

In order to give those hard-working docents holiday time,

**Our museums will be closed from
December 22 until January 10, 2014**

Volunteer hours for
October = 355

Docents = 65

Volunteer Hours to date this year

4,857

Annual Membership Dues

| | |
|---|----------|
| Individual | \$ 20.00 |
| Couple | \$ 35.00 |
| Family w/children under 18 | \$ 40.00 |
| Sustaining (Individual) | \$100.00 |
| Patron: | \$200.00 |
| Business, Organization, Individual | |
| Life (Individual or Couple) | \$500.00 |
| May be paid in 12 monthly installments. | |

The Society is structured as a
non-profit organization 501(c)3
(Federal Tax ID 95-3539454)

and depends solely on donations to continue its work.

You can help!

**Write a (tax-deductible) check to the
South County Historical Society,
and mail it to:**

South County Historical Society
PO Box 633, Arroyo Grande, CA 93421-0633



2014 MEMBERSHIP — SOUTH COUNTY HISTORICAL SOCIETY



☐ CHANGES?

☐ NEW

☐ GIFT

☐ RENEWAL

Please print legibly.

Name (s) * _____

Address * _____

Home Tel: * _____ Cell Tel: * _____ Email: * _____

Type of Membership _____ Amount Enclosed: \$ _____ Check No. _____

Please mail check or money order payable to SOUTH COUNTY HISTORICAL SOCIETY,
PO Box 633, Arroyo Grande Ca 93421.

* Starred information will be printed in the annual Membership Directory distributed to members
unless you indicate otherwise here.

PO Box 633
Arroyo Grande CA 93421

visit our website
www.SouthCountyHistory.org
Friend us on Facebook

email
SCHS76@sbcglobal.net



Non-Profit Org
US Postage Paid
Arroyo Grande
CA 93421
PERMIT 15

December 8 - *Elegant Evening in the Village* coincides with our ***Society's "Christmas Gathering"***

to be held at the IOOF Hall on Bridge Street **from 5:00 pm until 8:00 pm.**

We will be serving hors d'oeuvres and wine and soft drinks and wishes for a Merry Christmas and Happy New Year.

Members please

RSVP - 489-8282

by Sat - 12/7

